

FROHN

Steel Cut-Wire for shot peening



Application

Shot Peening

Material

1.1212 (C58D2)

1.1242 (C72D2) to 1.1253 (C76D2)

1.1262 (C82D2) to 1.1265 (C86D2)

Other materials available upon request

Manufacturing standards / Applicable Specifications

VDFI 8001, DIN 8201-4, ISO 11124-1, AMS 2431-3, AMS 2431-8, AMS-S-13165, SAE-J441, GE Specs, BAC Specs, etc.

Sizes in mm (inch)

0,3 (.012)

0,5 (.020)

0,8 (.032)

1,2 (.047)

0,35 (.014)

0,6 (.023)

0,9 (.035)

1,4 (.054)

0,4 (.017)

0,7 (.028)

1,0 (.041)

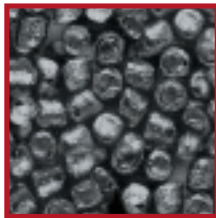
1,6 (.062)

Other sizes available upon request

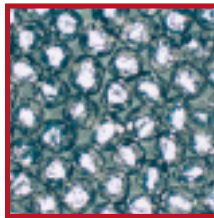
Grain shape



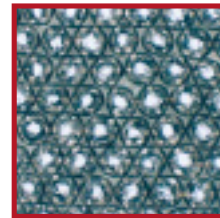
cylindrical (CW)



G1 conditioned (CCW)



G2 double conditioned (DCCW)



G3 spherical conditioned (SCCW)

Hardness of Conditioned Cut Wire

530 HV_{0,5/1} – 590 HV_{0,5/1}

610 HV_{0,5/1} – 670 HV_{0,5/1}

640 HV_{0,5/1} – 700 HV_{0,5/1}

670 HV_{0,5/1} – 730 HV_{0,5/1}

Packaging

- 25 kg PE plastic bags on European pallet up to 1000 kg

- Big Bags from 500 to 1000 kg on non-returnable pallet

- 200 liter barrels from 800 to 1000 kg

Other packaging available upon request